



USP45 Polyclonal Antibody

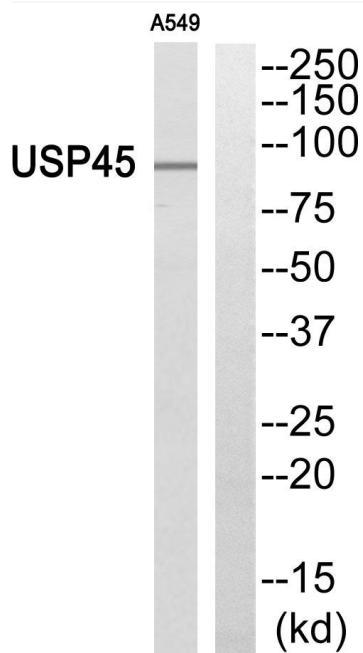
Catalog No	YP-Ab-02840
Isotype	IgG
Reactivity	Human;Mouse;Rat
Applications	WB;ELISA
Gene Name	USP45
Protein Name	Ubiquitin carboxyl-terminal hydrolase 45
Immunogen	The antiserum was produced against synthesized peptide derived from human USP45. AA range:301-350
Specificity	USP45 Polyclonal Antibody detects endogenous levels of USP45 protein.
Formulation	Liquid in PBS containing 50% glycerol, 0.5% BSA and 0.02% sodium azide.
Source	Polyclonal, Rabbit,IgG
Purification	The antibody was affinity-purified from rabbit antiserum by affinity-chromatography using epitope-specific immunogen.
Dilution	Western Blot: 1/500 - 1/2000. ELISA: 1/10000. Not yet tested in other applications.
Concentration	1 mg/ml
Purity	≥90%
Storage Stability	-20°C/1 year
Synonyms	USP45; Ubiquitin carboxyl-terminal hydrolase 45; Deubiquitinating enzyme 45; Ubiquitin thioesterase 45; Ubiquitin-specific-processing protease 45
Observed Band	90kD
Cell Pathway	Photoreceptor inner segment . Cytoplasm . Nucleus .
Tissue Specificity	Widely expressed. High expression is detected in the cerebellum. In the eye, it is expressed at high levels in the optic nerve, sclera and retina, with relatively low levels in the choroid, lens and retinal pigment epithelium (PubMed:30573563).
Function	catalytic activity:Ubiquitin C-terminal thioester + H(2)O = ubiquitin + a thiol.,similarity:Belongs to the peptidase C19 family.,similarity:Contains 1 UBP-type zinc finger.,tissue specificity:Broadly expressed, with highest levels in ovary, skeletal muscle and spleen.,
Background	The protein encoded by this gene is a deubiquitylase that binds ERCC1, the catalytic subunit of the XPF-ERCC1 DNA repair endonuclease. This endonuclease is a critical regulator of DNA repair processes, and the deubiquitylase activity of the encoded protein is important for maintaining the DNA repair ability of XPF-ERCC1. [provided by RefSeq, Sep 2016],
matters needing attention	Avoid repeated freezing and thawing!



Usage suggestions

This product can be used in immunological reaction related experiments. For more information, please consult technical personnel.

Products Images



Western blot analysis of USP45 Antibody. The lane on the right is blocked with the USP45 peptide.